



OREGON

DEPARTMENT OF AGRICULTURE

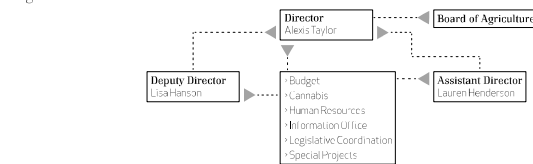
DIRECTOR ALEXIS TAYLOR

www.Oregon.gov/ODA

OREGON

DEPARTMENT OF AGRICULTURE

Oregon Department of Agriculture
Organizational Chart



Program Area Director Cathy (Nicolas) Bruning	Program Area Director Mark Stajano	Program Area Director Stephanie Page	Program Area Director Melvin Rugg	Program Area Director Jason Barber
Market Access & Certification Programs	Food Safety & Animal Health Programs	Natural Resource Programs	Plant Protection & Conservation Programs	Internal Service & Consumer Protection Programs
<ul style="list-style-type: none"> Agricultural Development & Marketing Certification Services Commodity Commissions Oversight Commodity Inspection Farm to School Program Plant Health Lab Seed Program Shipping Point Inspection Specialty Crop Block Grant Program 	<ul style="list-style-type: none"> Animal Health & Lab Animal Identification Commercial Animal Feeds Food Safety Shellfish Biotoxin Testing Shellfish Plate Learning State Veterinarian 	<ul style="list-style-type: none"> Agricultural Water Quality Confined Animal Feeding Operations GIE Mapping Land Use Pesticide Analytical & Response Center Pesticide & Fertilizer Programs Smoke Management Soil & Water Conservation Districts Program 	<ul style="list-style-type: none"> Industrial Hemp Insect Pest Prevention & Management Noxious Weed Program Nursery & Christmas Tree Program Nursery Research Grant Program Native Plant Conservation 	<ul style="list-style-type: none"> Egg Laying Hens Laboratory Services Metrology Lab Motor Fuel Quality Weights & Measures Wolf Compensation

ODA STRATEGIC PLAN 2018-2023

Mission

Ensure healthy natural resources, environment, and economy for Oregonians now and in the future through inspection and certification, regulation, and promotion of agriculture and food.

Vision

The Oregon Department of Agriculture remains able to serve the changing needs of Oregon's diverse agricultural and food sectors to maintain and enhance a healthy natural resource base and strong economy in rural and urban communities across the state.

ODA STRATEGIC PLAN KEY OBJECTIVES



OBJECTIVE 1: ROLE MODEL ORGANIZATION

- Be adaptive
- Achieve operational objectives and goals
- Provide quality work products and services



OBJECTIVE 2: CULTURE OF COMPLIANCE & SUPPORT

- Provide education and outreach with a regulatory backstop
- Use progressive compliance strategies



OBJECTIVE 3: CULTURE OF COLLABORATION

- Engage interested parties
- Respect all view points
- Develop and grow partnerships



OBJECTIVE 4: FOSTER EMPLOYEE EXCELLENCE

- Integrate mission and values into daily work
- Support an encouraging work atmosphere
- Provide professional growth opportunities



ODA STRATEGIC PLAN KEY OBJECTIVES



OBJECTIVE 5: EXCELLENCE IN CUSTOMER SERVICE

- Embrace, support, and promote the diversity of Oregon agriculture
- Address customers' needs



OBJECTIVE 6: CONNECT & PROMOTE OREGON AGRICULTURE

- Raise awareness of opportunities within Oregon agriculture
- Connect Oregonians to Oregon agriculture



OBJECTIVE 7: INCLUSIVE COMMUNICATION

- Be clear and concise
- Use effective tools
- Be responsive to customers, consumers, and public



OVERVIEW OF OREGON AGRICULTURE

- **16,300,000 acres in production agriculture or 26% of total land**
- **34,400 farms in Oregon (2016)**
- **Average farm size is 474 acres**
- **Over 60% of farms are less than 50 acres**
- **Farms 500 acres or more in size comprise about 88% of the land area in farms**



OVERVIEW OF OREGON AGRICULTURE

- **1,200 Oregon Century Farms**
 - Operated continuously in the same family for 100 years
- **39 Oregon Sesquicentennial Farms**
 - Operated continuously in the same family for 150 years
- **96% of farms in Oregon are family owned and run**
- **22,722 women farmers in Oregon (or 39%)**



7

LOOK AT AG IN THE STATE – OREGON’S TOP 10

1. Greenhouse & nursery	\$947
2. Cattle & calves	\$695
3. Hay	\$585
4. Milk	\$500
5. Grass seed	\$455
6. Wheat	\$238
7. Potatoes	\$176
8. Pears	\$176
9. Grapes for wine	\$171
10. Blueberries	\$147



\$ million, 2017

8

DIVERSITY OF PRODUCTION

- **Over 225 commodities produced in Oregon**
- **Diversity in crops, production systems, farm sizes, and markets keeps the industry resilient**
- **Varied size of farms and methods of production.**



OREGON'S TOP 10 AG PRODUCING COUNTIES

County	Value of agricultural sales
Marion	\$639 million
Umatilla	\$487 million
Morrow	\$482 million
Malheur	\$373 million
Clackamas	\$343 million
Linn	\$301 million
Washington	\$292 million
Klamath	\$290 million
Yamhill	\$269 million
Polk	\$162 million



IMPORTANCE OF AGRICULTURE IN OREGON

- **Oregon's agriculture industry is economically linked to approximately \$50 billion of sales from all sectors (or 13.2 percent)**
- **Agriculture employs over 326,000 full/part-time workers**
- **\$5.2 billion in farmgate value**
- **Oregon products reach outside the state**



11



FOOD PROCESSING

3rd largest manufacturing sector in the PNW

200+ food processors in Oregon

Multnomah County leads Oregon in food processing

Marion County is second

12

OREGON EXPORTS

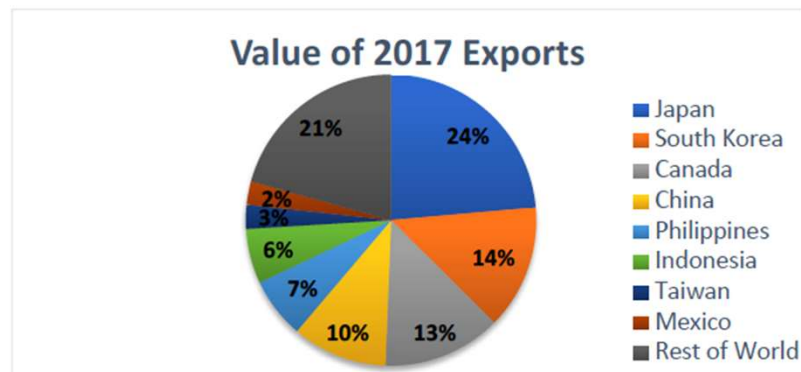
- 80% of production leaves the state, 40% of production leaves the country.
- Ag and food products are the third largest export sector in terms of value.
- Ag accounts for about 9% of total state exports.

Major agricultural exports

- Wheat
- Fresh fruit and vegetables
- Processed fruit and vegetables
- Hay/Straw
- Grass seed
- Specialty seeds
- Hazelnuts
- Trees/shrubs
- Wine and craft beer

13

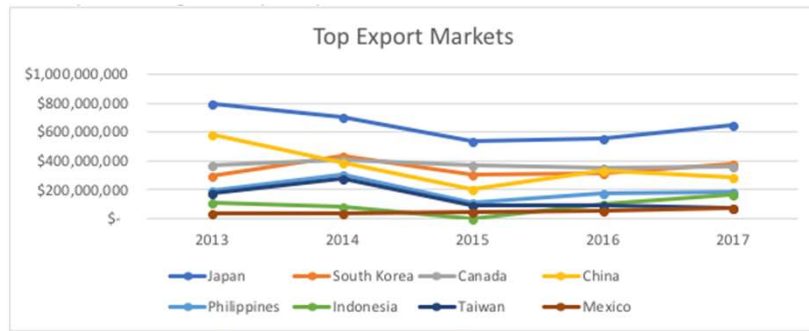
2017 TOP EXPORT MARKETS



Source: Euromonitor report for value of exports from Oregon in 2017

14

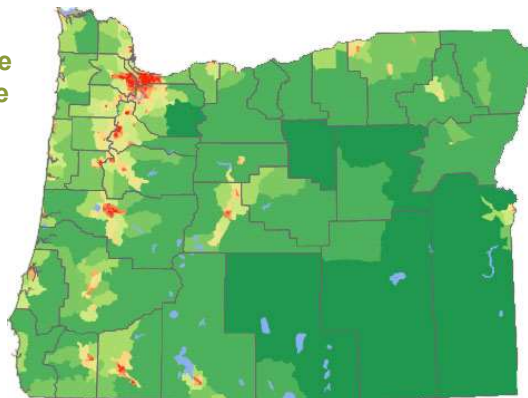
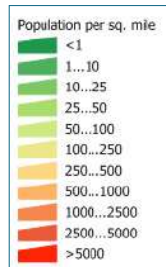
TOP EXPORT MARKETS – 5 YEAR LOOK



Source: Euromonitor report of exports from Oregon by value.

POPULATION OF OREGON

- 4.14 million (2017)
- Concentration west of the Cascade Mountain Range

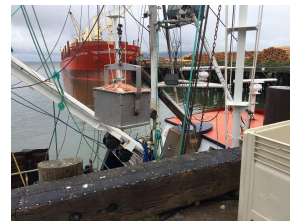


OREGON'S DIVERSE GROWING REGIONS



COASTAL REGION

The bounty of the Pacific is found here in full splendor, offering a delicious menu that includes salmon, halibut, Dungeness crab, oysters, mussels, clams and more. Coastal dairy farms are famous for their cheeses. Specialty crops in this region include cranberries and lily bulbs.



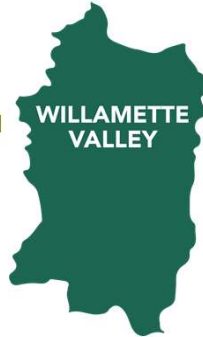
Key Facts

- 4 million total acres
- 1,692 farms
- 303,996 farm acres



WILLAMETTE VALLEY

Perhaps the most diverse agricultural region on earth, this region produces more than 170 different crops including grain, hay, grass seed and specialty seeds of all kinds. Fresh and processed vegetables, tree fruits, berries, hazelnuts, wine grapes, and hops are grown in the valley, too, along with nursery products, Christmas trees, dairy and beef cows, as well as poultry.



Key Facts

- 9 million total acres
- 18,114 farms
- 1.7 million farm acres



SOUTHERN OREGON

Sheep and cattle graze in mountainous, hilly areas of this region. The Rogue River Valley produces pears and other high quality tree fruit. Wine production is coming on strong. The Klamath Basin is home to beef cattle, alfalfa and other hay varieties, and lots of potatoes.



Key Facts

- 6.1 million total acres
- 4,266 farms
- 624,721 farm acres



MID COLUMBIA GORGE/PLATEAU

This remarkable area is famous for its high quality tree fruit. Hood River traditionally grows more pears than any other area of the country. Sweet cherries prosper in this region. Apple trees are plentiful with cider production a growing trend. Irrigation along the Columbia River has transformed desert into productive farmland where you can find potatoes, onions and a variety of vegetables



Key Facts

- 6.6 million total acres
- 3,584 farms
- 5.2 million farm acres



CENTRAL OREGON

Tucked in the middle of the state, this popular recreational region produces a variety of specialty seed crops to go along with garlic, hay, and beef cattle. An increasing urban population in Bend has also led to a growth in local production of fresh vegetables.



Key Facts

- 5 million total acres
- 2,308 farms
- 1.8 million farm acres



NORTHEAST OREGON

Beef cattle, hay, potatoes, and mint grow in this scenic area of the state. But the most intensive production is found in the Treasure Valley along the Idaho border where much of the nation's onion production takes place. Other irrigated crops include sugar beets and a variety of vegetables.



Key Facts

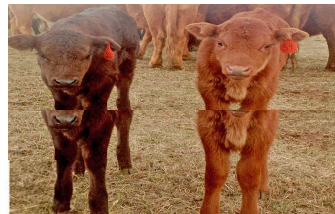
- 9.4 million total acres
- 2,547 farms
- 2.9 million farm acres

23



SOUTHEAST OREGON

The livestock industry dominates this region. Most of Oregon's cattle graze on thousands of acres of private and federal rangeland. Because of low rainfall, most hay fields and pastures must be irrigated. Major crops include onions, potatoes, and sugar beets.



Key Facts

- 22.2 million total acres
- 2,938 farms
- 3.9 million farm acres

24

OREGON IS NUMBER ONE!

Oregon is ranked 1st in the US for 12 commodities

Blackberries	Red clover seed
Boysenberries	Fescue seed
Hazelnuts	Potted florist azaleas
Orchardgrass seed	Sugarbeet for seed
Ryegrass seed	Rhubarb
Crimson clover	Christmas trees



OREGON
DEPARTMENT OF AGRICULTURE

THANK YOU